

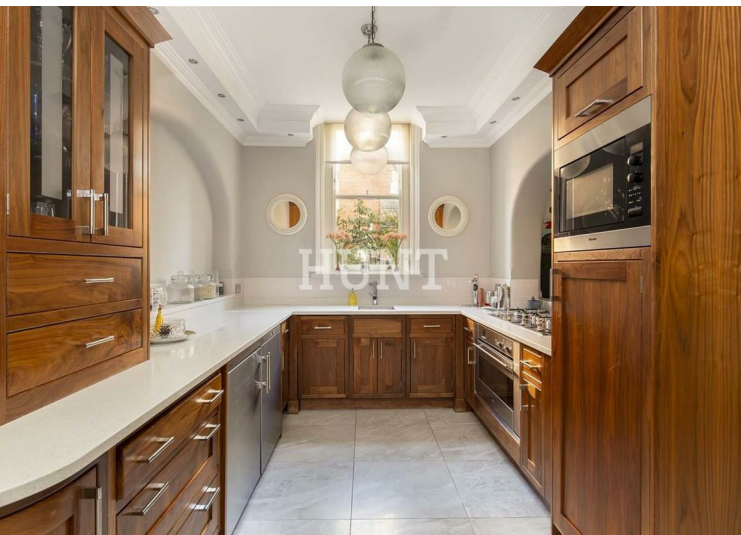
MONTAGUE HOUSE | CLAYBURY VILLAS | REPTON PARK | IG8



Montague  
HOUSE

**HUNT**  
Property Services Ltd





## DESCRIPTION

Stunning four bedroom duplex apartment set over 3000sq ft. Situated behind the gated Montague House within Repton Park with CCTV. This quality apartment comprises of a Grand entrance Hall with beautiful ornate staircase, many original features including detailed cornice, over sized skirting boards and panelling.

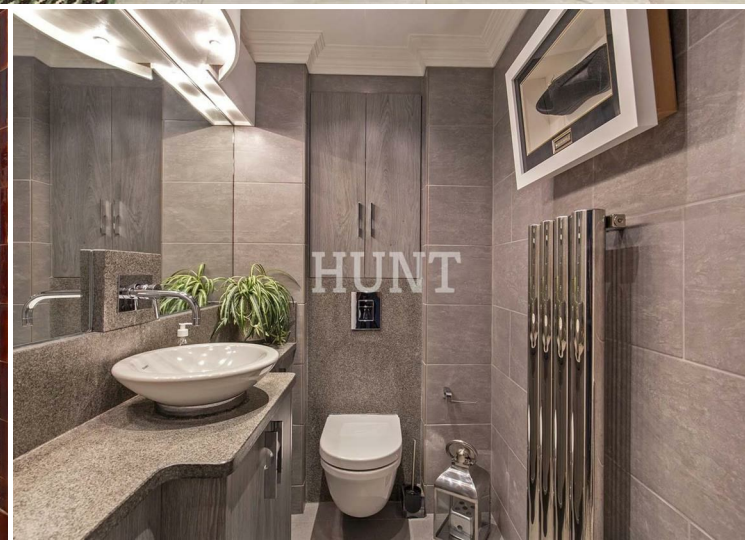
Superb large lounge with solid wood parquet flooring, feature bay windows with stunning views to Claybury Forest. Reception two has direct access to a charming private and secluded garden. Handmade high spec kitchen with granite. This is a must see property with five private parking spaces.



## SUMMARY

- GROUND FLOOR
- SPLIT LEVEL FOUR BEDROOM APARTMENT
- SECONDARY PRIVATE GATES TO CLAYBURY VILLAS
- STUNNING VIEWS TO FOREST
- EXCEPTIONAL RECEPTION ROOM WITH OAK PARQUET FLOORING
- DETAILED HIGH CEILINGS & SASH WINDOWS
- £10,000 PA SERVICE CHARGE, GROUND RENT £400 PA
- 24 HOUR CONCIERGE, NIGHT TIME SECURITY
- 145 ACRES OF MATURE PARKLAND AND FOREST
- SOLE AGENT

Asking Price £1,900,000



MONTAGUE HOUSE | CLAYBURY VILLAS | REPTON PARK | IG8



732 Chigwell Road  
Woodford Green  
Essex  
IG8 8AL